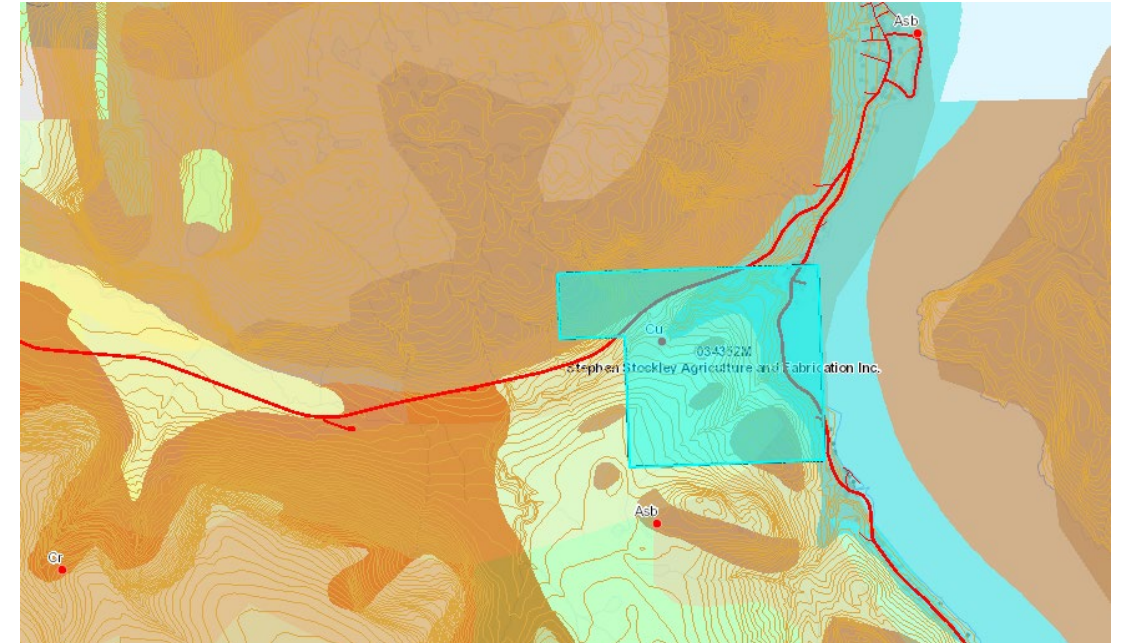


Winter House Brook – Ni-Cu Project

- ★ **Major Commodity:** Copper
- ★ **Secondary Commodities:** Nickel, Gold, Platinum
- ★ **Deposit Type:** Intrusive ultramafic - mafic magmatic deposit (orogenic intrusion association)
- ★ **Easy access** from town of Woody Point



Assays of one float and two outcrop returned the following (Smith 1958):

Sample	% Cu	% Ni	Pt Group	Au (oz/ton)
Float	2.50	1.25	Tr	Tr
1	1.48	1.33	Tr	0.005
2	1.79	1.54	Tr	0.003

Contact: Stephen Stockley,
stockleysteve@hotmail.com



Get all the details:
www.nlminerals.com